

# MONTHLY MEMBERSHIP PROGRESS REPORT

LOCATION ONTARIO

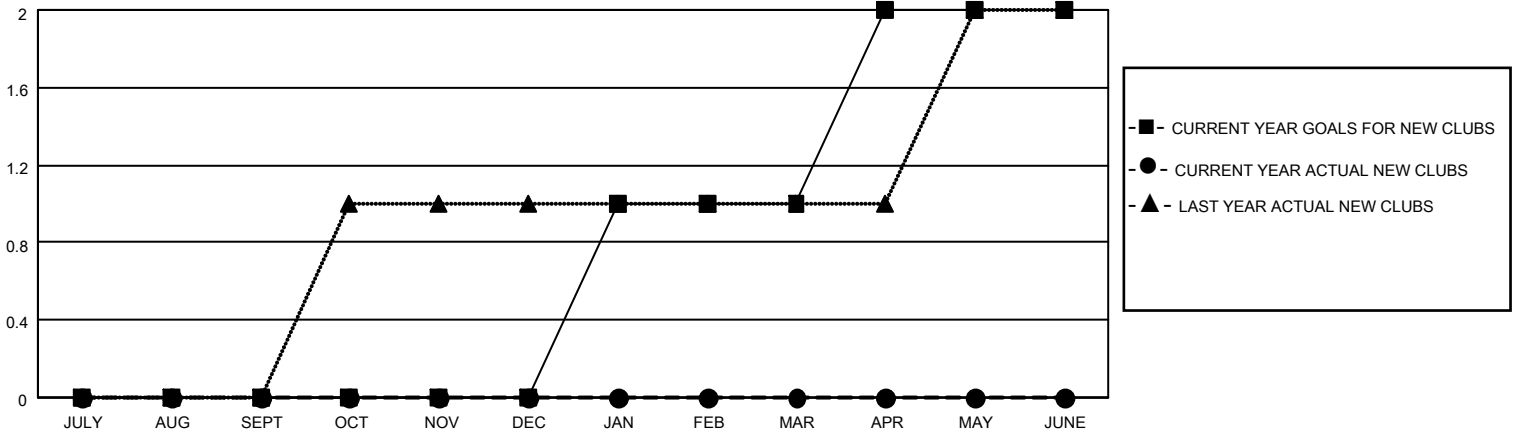
District A 1

Results as of: 5/31/2022

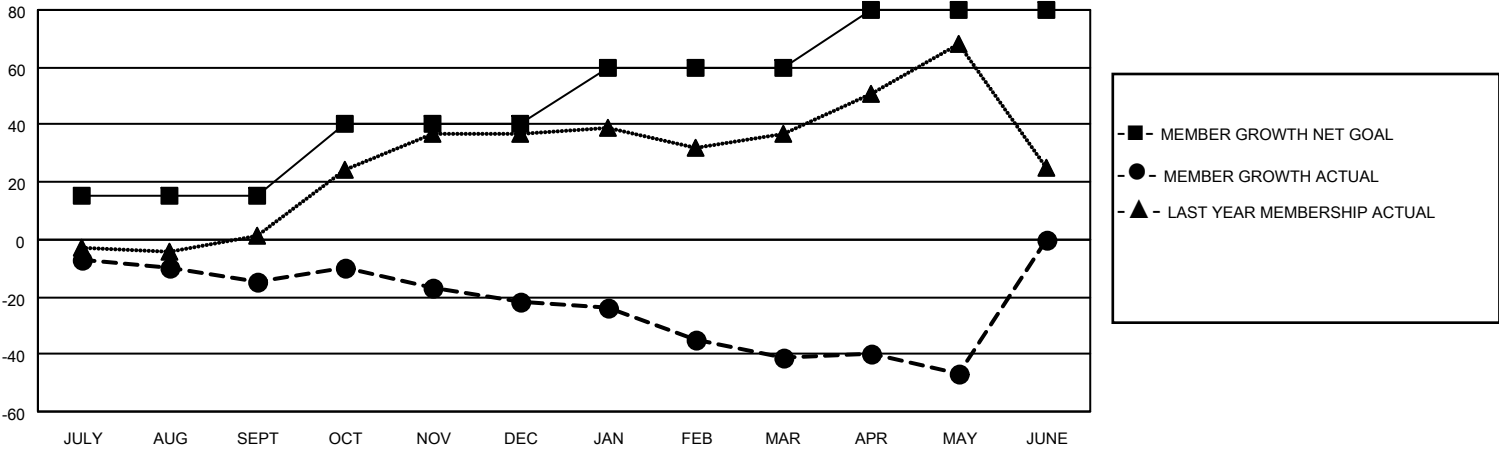
Clubs			
RESULTS FOR 2021-2022			
QUARTER	NEW CLUB GOAL	NEW CLUBS	DROPPED CLUBS
JULY/AUG/SEPT	0	0	0
OCT/NOV/DEC	0	0	0
JAN/FEB/MAR	1	0	0
APR/MAY/JUNE	1	0	0

Members			
RESULTS FOR 2021-2022			
QUARTER	MEMBER GROWTH NET GOAL	MEMBER GROWTH ACTUAL	DROPPED MEMBERS ACTUAL (including transfers)
JULY/AUG/SEPT	15	8	22
OCT/NOV/DEC	25	31	36
JAN/FEB/MAR	20	6	24
APR/MAY/JUNE	20	12	17

**GOALS AND ACTUAL NEW CLUBS CUMULATIVE**



**GOALS AND ACTUAL MEMBERS CUMULATIVE**



**DROPPED CLUBS: 0**

**19 CLUBS OF 41 ADDED 1 OR MORE NEW MEMBERS**

**GENDER DISTRIBUTION**

MALE	835 (73.31%)
FEMALE	304 (26.69%)
NON BINARY	0 (0.00%)
PREFER NOT TO ANSWER	0 (0.00%)

**DROPPED MEMBERS**

[CLICK HERE FOR CUMULATIVE MEMBERSHIP DATA](#)

DECEASED	22
CLUB CANCELLED	0
OTHER	77
<b>TOTAL</b>	<b>99</b>

TOTAL FAMILY UNIT MEMBERS	179
FAMILY MEMBERS PAYING HALF DUES	90